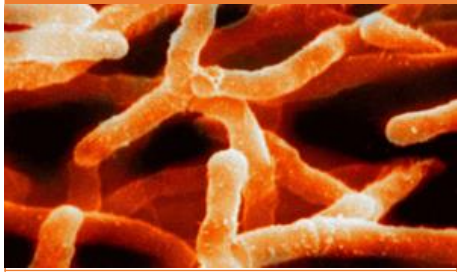


Actinomycetes



Creature type: Bacteria

Lives: around the edges of soil particles in the rhizosphere close to plant roots.

Abilities: Master eater - can decompose tough materials like the lignin in bark and the exoskeletons of dead insects.

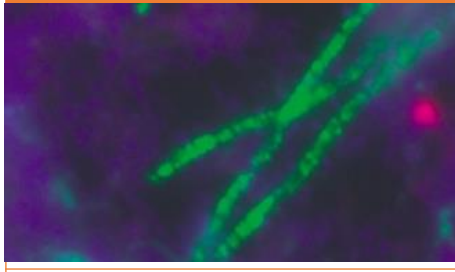
Connections:

Eats dead plants, leaves and animals.

Eaten by protozoa and nematodes.

Microbe

Acidobacteria



Creature type: Bacteria

Lives: around the edges of soil particles in the rhizosphere close to plant roots.

Abilities: Ravenous wizard - decomposes dead plants and animals and transforms them into nutrients that can be used by others.

Connections:

Eats dead plants, leaves and animals .

Eaten by protozoa and nematodes.

Microbe

Fungi



Creature type: Fungi

Lives: in the rhizosphere close to plant roots.

Abilities: Explorer transformer - Branches through the soil in a search of food and plants it can swap nutrients for energy with. Some fungi trap and kill nematodes.

Connections:

Eats dead plants, leaves and animals.

Eaten by nematodes and arthropods.

Fungi

Ciliate



Creature type: Protozoa

Lives: in the rhizosphere close to plant roots.

Abilities: Bacteria hunter- ciliates use their many hair-like cilia like legs to move about and hunt bacteria.

Connections:

Eats bacteria

Eaten by nematodes

Microfauna

Amoeba



Creature type: Protozoa

Lives: in the rhizosphere close to plant roots.

Abilities: Mega slug - one type of amoeba called a Dicty lives alone unless food is scarce and then tens of thousands of them come together to form one big slug shape to go on a hunt for food.

Connections:

Eats bacteria

Eaten by nematodes

Microfauna

Flagellate



Creature type: Protozoa

Lives: in the rhizosphere close to plant roots.

Abilities: Super spreader - the number of flagellates grows rapidly when there's enough bacteria for them to eat.

Connections:

Eats bacteria

Eaten by nematodes

Microfauna

Tardigrade



Creature type: Microscopic invertebrate

Lives: in water in the top layer of soil

Abilities: **Extreme survivor** - can survive in extreme environments including space.

Connections:

Eats: bacteria, protozoa, plant cells, fungi, other tardigrades

Eaten by: nematodes, other tardigrades

Microfauna

Nematode



Creature type: Microscopic invertebrate

Lives: wherever their food can be found

Abilities: **Hungry traveller** - Moves through the soil carrying and redistributing microbes.

Connections:

Eats: bacteria, protozoa, other nematodes, fungi or roots.

Eaten by: some fungi, earthworms and nematodes

Microfauna

Springtail



Creature type: Arthropod

Lives: in leaf litter, soil and even in people's houses

Abilities: **Rain leaper**- can jump incredible distances. Thrives in damp environments

Connections:

Eats: bacteria, protozoa, decaying plants, fungi

Eaten by: beetles and spiders

Mesofauna

Earthworm



Creature type: Invertebrate

Lives: in the top meter of soil where it's damp

Abilities: **Soil architect** - burrows through the soil creating spaces for water and air. Breaks food into smaller pieces that bacteria and fungi can feed on.

Connections:

Eats: decaying plants, leaf litter, soils

Eaten by: birds, moles, badgers

Macrofauna

Gull



Creature type: Bird

Lives: in urban areas and at the coasts. Some build their nests on rooftops.

Abilities: **Worm charmer** - can dance like the rain on the ground to trick worms into coming up to the surface.

Connections:

Eats: earthworms, fish, household waste.

Fauna